

June 4, 2015
Jessica Knickerbocker,
City of Tacoma

introducing
**Permeable Pavements
in Tacoma**

The slide features a blue abstract graphic in the top left, a grey background with the date and presenter information, the Tacoma logo, and a green grass border at the bottom.

Permeable Pavement Overview

Overview of Technologies Case Studies A Community of Practice

We have tips for every step of the way

The slide features three colored circles (orange, blue, green) representing the steps, with a green grass border at the bottom.

1 Overview of Technologies

You have options!

The slide features a large orange circle with the number 1, four small images showing different pavement types, and a green grass border at the bottom.

Grass/Gravel Paving



LeMay Car Museum



Clarks Creek Park, Puyallup



Photo by City of Puyallup, Invisible Structures

Grass Recommendations

- < 5 passes per day
- Sufficient Water and Sun
- < 8% Slope
- Mow to 1.25 inches

Tacoma Community College

Permeable Pavers



UNI Ecolog Pavers 3 1/8"

2008

Pervious Concrete



TCC
Tacoma Community College

Campus Entrance

A Combined Concrete Approach

Residential



Residential
Pervious concrete parking lanes
Pervious sidewalks, bioretention

Arterial



Arterial
Pervious concrete parking lanes
Infiltration extends under standard sidewalk

Challenges & Solutions

New HMA Leaches

Vacuum Turning Radius

Overflow Infiltration Gallery

Gutters are BAD

Porous Asphalt

Residential - Wapato Lake Drive

Alley

Cheney Stadium

2014

PERVIOUS SIDEWALK

LANDSCAPE

NEW PERVIOUS ASPHALT

Life Cycle Cost Saving
Parking and Roadways

- Raveling

Challenges & Solutions




Lack of Industry Standards

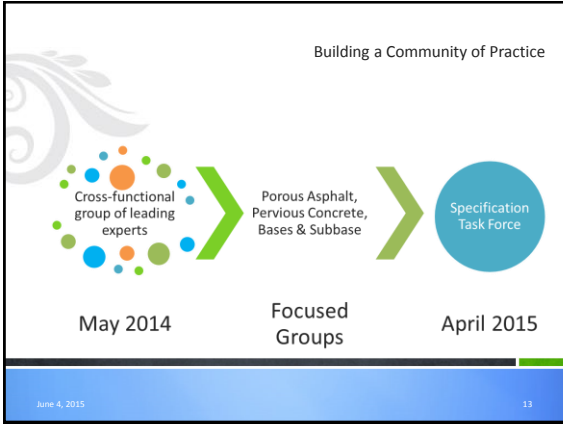
3 Building a Community of Practice

Continuous **UNITED** Improvement

Why do we need standards?



June 4, 2015 12





- The Specifications
- 1-05.3 Inspection of Work & Materials
 - 2-06 Subgrade Preparation
 - 4-04 Ballast & Crushed Surfacing
 - 5-04 Porous Asphalt
 - 5-06 Pervious Concrete
- June 4, 2015 15

What's Next?


Continuous **UNITED** Improvement

- Specification Task Force

Join us - Google Group

<https://groups.google.com/forum/#!forum/permeable-pavements-for-puget-sound>

- Alternative tests used throughout the country that better reflect the final product.



June 4, 2015
Jessica Knickerbocker, City of Tacoma
jknicker@cityoftacoma.org
(253)502-2119



Permeable Pavements in Tacoma