


**Eastern Washington
Effectiveness Study Development**

Phase I Update – 12 AUG 2015


Art Jenkins, PE, CSM
City of Spokane Valley



Overview

- Permit Requirements
- 2013 Multi-Year/Multi-Phase Schedule
- Phase I - Project
 - Process
 - Accomplishments
 - Lessons Learned
- Next Steps


2 Eastern Washington Effectiveness Study Development - Phase I Update 12 August 2015

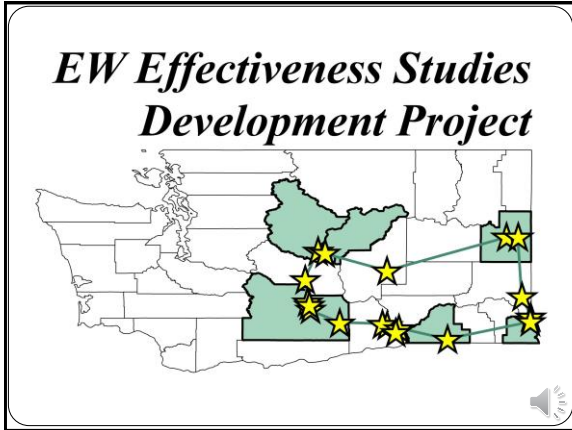


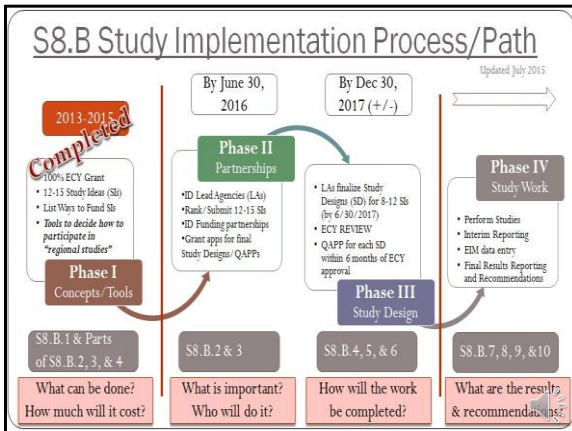
EW Permit S8.B Requirements

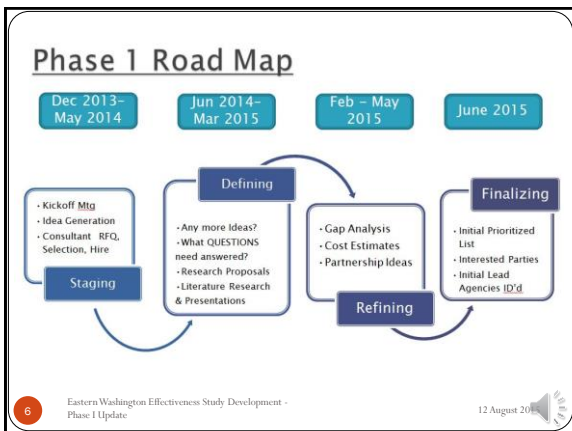
- Permittees Collaborate on S8.B
- Develop SW program study ideas
- Prioritize a list of 12-15 study ideas
- Complete 8-12 study designs & QAPP's
- Implement 8-12 approved studies
- Report results & recommend future actions

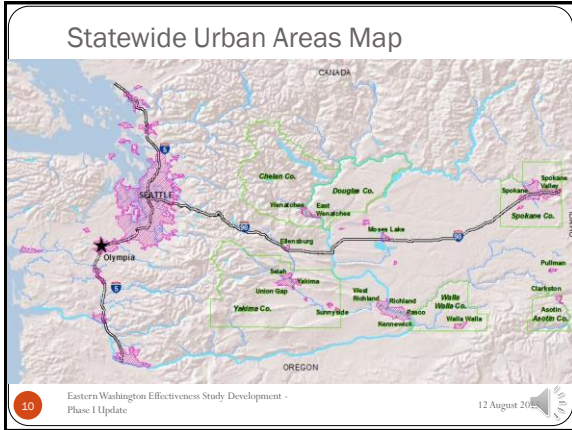
3 Eastern Washington Effectiveness Study Development - Phase I Update 12 August 2015











Phase I Project – Lessons Learned

- There are a lot of differences between eastern Washington jurisdictions, even next door to one another
- Online meetings were great at getting more people and different way to participate, but did not completely replace in person meetings

11 Eastern Washington Effectiveness Study Development - Phase I Update 12 August 2015

Next Steps

- Ongoing EWSW Group meetings
- Phase II (2015-2016):
 1. Lead entities
 2. Which studies to fund
 3. Organization for cost sharing and project management
 4. Final list to Ecology by 30 JUN 2016

12 Eastern Washington Effectiveness Study Development - Phase I Update 12 August 2015

Proposed GRSS Grant Project	Please indicate your level of interest and support for the following proposed projects: (provide an answer for each project and check all boxes that apply)					# of Responses	What is your priority rank for the following proposed projects? (rank all)										# of Respondents Scoring Top Priority (1st) to Lowest Priority (10th)	Weighted Average Score
	Not Interested (Don't Care)	We agree with and recommend approval of the proposed project	We are interested in participating on an advisory group for this project	We would like consideration as a partner on this proposed project	Applicable, but not interested in joining regional events/meetings for this project		Total Responding to Question	1st (Top Priority)	2nd	3rd	4th	5th	6th	7th	8th	9th		
Eastern Washington Effectiveness Study Development Phase 2 and Phase 3	0	13	16	4	3	36	11	3	2	3	1	0	0	0	1	19	8.79	
Mobile Business Outreach and Education GROSS Grant	0	14	12	5	0	31	4	3	3	3	2	1	0	0	0	19	8.62	
Unvegetated Soil Mix Development and Effectiveness Study	4	9	10	6	1	30	0	6	4	2	2	5	0	0	0	19	7.23	
Eastern Washington K-12 Stormwater Education Curriculum Development and Evaluation	1	11	11	6	1	30	0	5	5	3	0	1	1	1	1	10	7.80	
Strategic Public Education and Awareness Campaign and Brand	1	12	10	5	1	30	1	1	4	6	5	2	0	0	0	19	7.80	
Washington State Municipal Stormwater Conference 2016	3	12	6	3	3	27	2	1	0	4	2	4	3	0	3	19	5.83	
Educating, Evaluating and Improving Flood Discharge Field Screening and Source Tracing	6	11	2	0	0	19	0	0	1	2	0	2	3	3	9	19	8.97	
Expanding the scope of LID Curriculum and Education throughout Washington with on-line training, a South...	7	12	0	0	0	19	0	0	0	0	2	8	6	1	2	19	8.97	
Update Stormwater Manual of Eastern Washington/Statewide UIC Guidance	9	6	4	3	2	26	1	0	0	1	1	2	2	3	7	19	8.16	
Rain Garden App	12	7	0	0	0	19	0	0	0	0	0	1	7	2	9	19	8.00	

