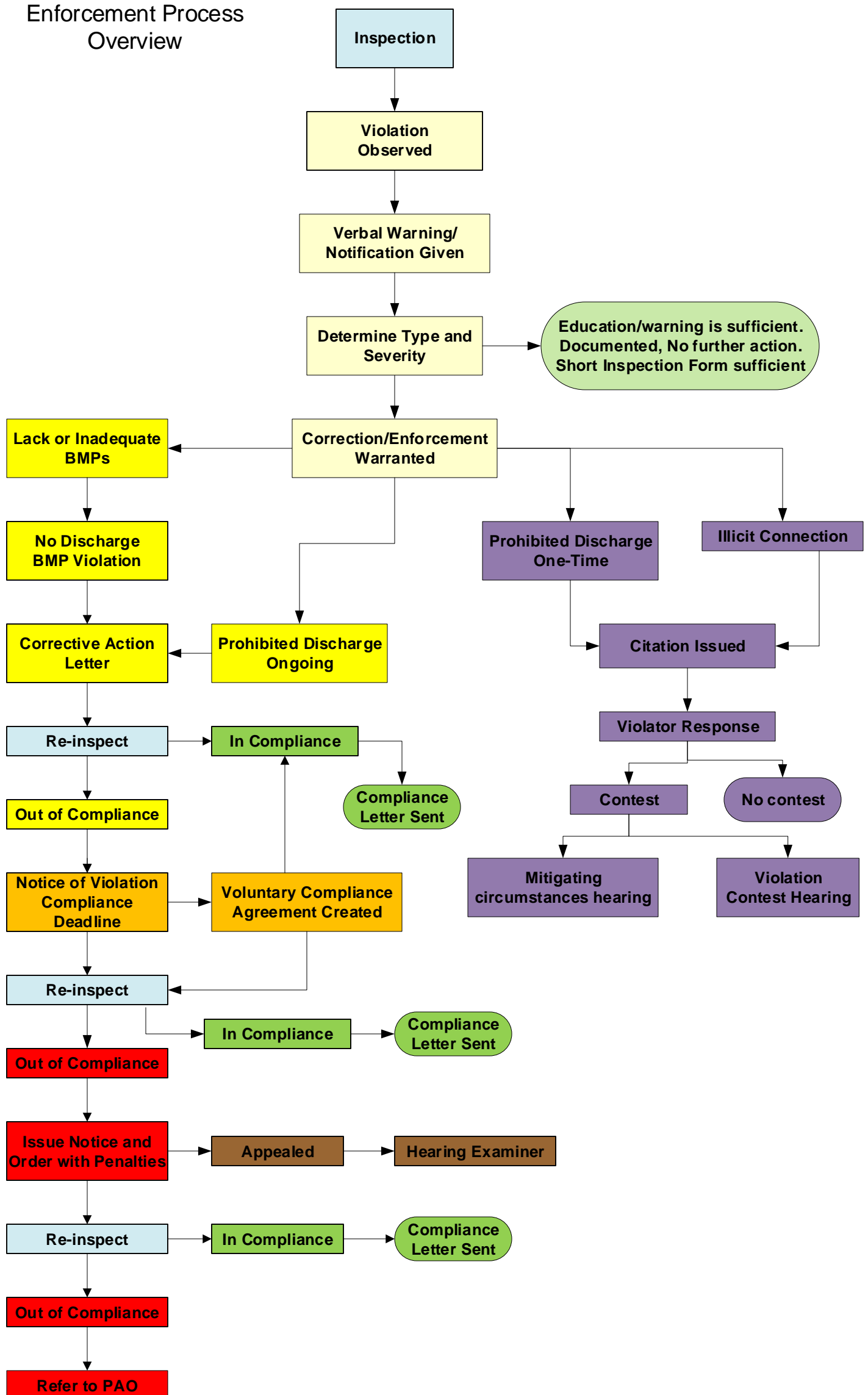


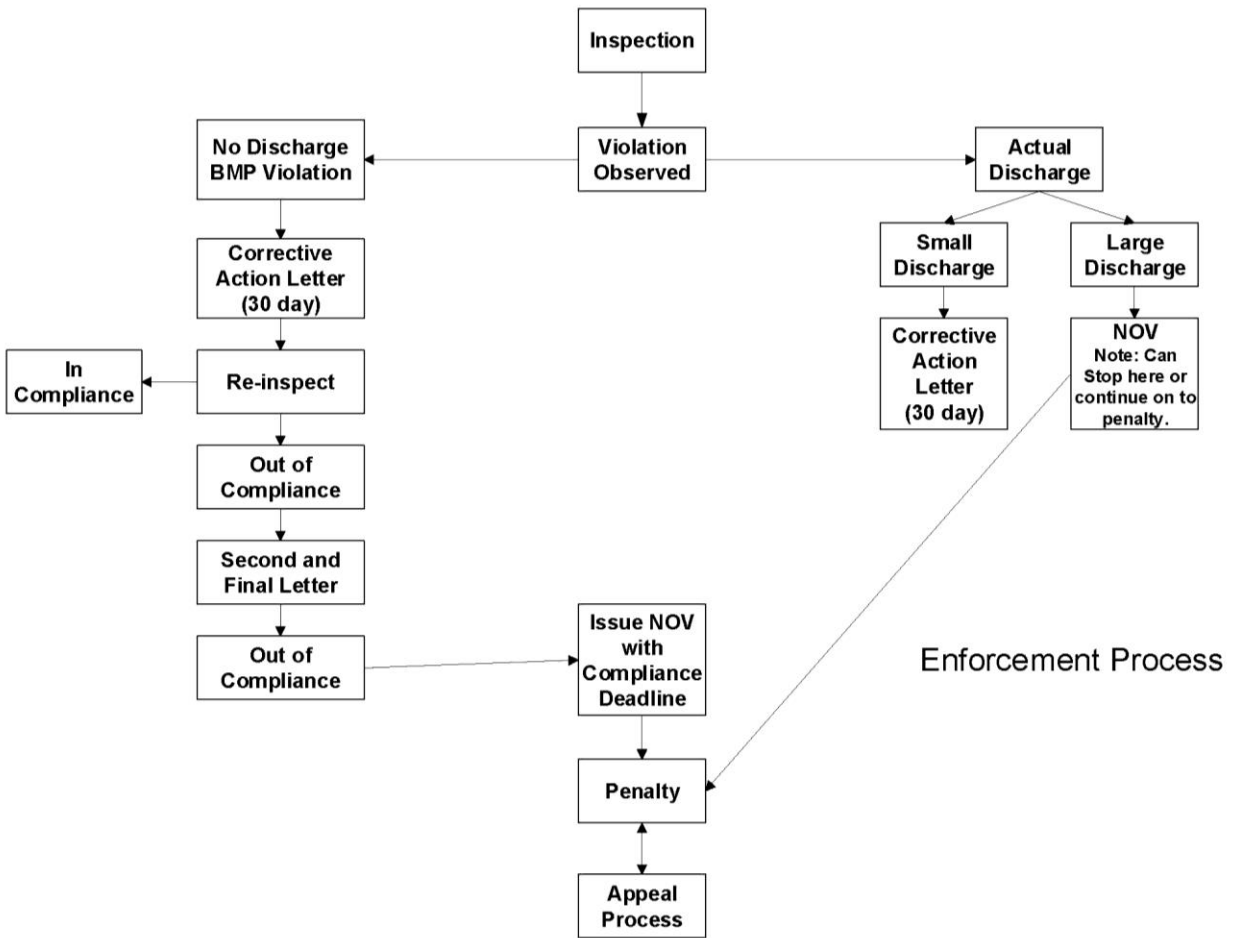
Chapter 2

Additional Enforcement Workflow Examples

- Example 1: from BIG Report Appendix D
- Example 2: from BIG Report Appendix D
- Example 3: SPU Enforcement Process – Illicit Discharges and Connections
- Example 4: SPU Inspection Process – BMP Based Violations

Enforcement Process Overview



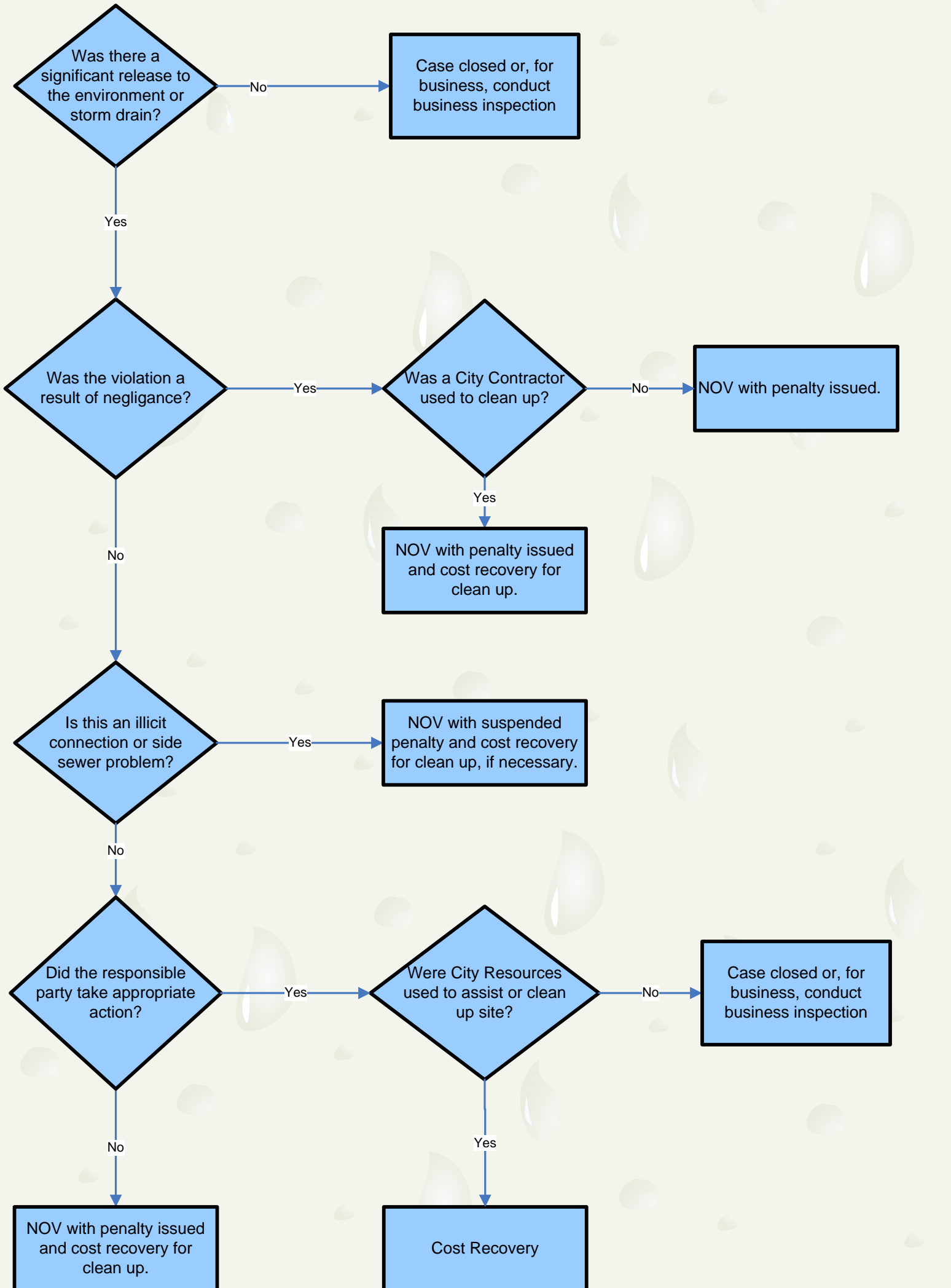


SPU Enforcement Process

Illicit Discharges and Connections

SMC 22.800-22.808

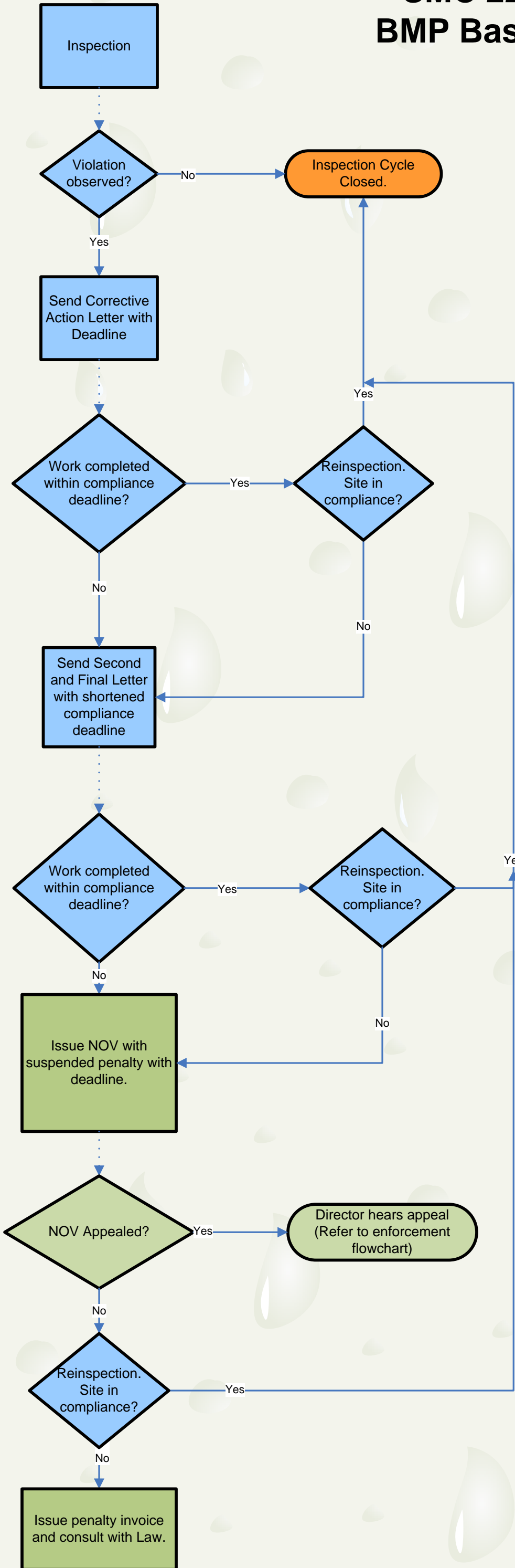
Note: Significant means it would have or did require clean up.



SPU Inspection Process

SMC 22.800-22.808

BMP Based Violations



Note: If there is an egregious violation, shorten compliance deadline to reflect severity of violation. If violation is maintenance based, use standard deadline. Consult with Supervisor if site has a history of noncompliance.

Note: Second and Final letter is a recommended step, but may be skipped if circumstances warranted. Consult with Supervisor if electing not to send a Second and Final Letter.

Note: Refer to Enforcement Flow Chart for specifics in this process